



DYLAN FREDERICK, REESE BRITTS, AND BECCA HART. PHOTO BY LUCAS WELLS

MERRILY WE ROLL ALONG

MUSIC AND LYRICS BY STEPHEN SONDHEIM
BOOK BY GEORGE FURTH
ORCHESTRATIONS BY JONATHAN TUNICK

DIRECTED BY PETER ROTHSTEIN
MUSIC DIRECTION BY JASON HANSEN



THEATER MUSICALLY

NOW - OCT 30, 2022 • RITZ THEATER

Compose yourself your way.

However your day unfolds,
let YourClassical MPR
meet you where you are.

TUNE IN OR STREAM AT YOURCLASSICALMPR.ORG



MERRILY WE ROLL ALONG

MUSIC AND LYRICS BY STEPHEN SONDHEIM
BOOK BY GEORGE FURTH
ORCHESTRATIONS BY JONATHAN TUNICK

THE CAST

(in alphabetical order)

Ru/Photographer/Minister/Ensemble	Ronnie Allen
Gussie	Vie Boheme*
Frank Jr.	Mathias Brinda•
Frank	Reese Britts*
Meg/Scottie/Ensemble	Camryn Buelow
Joe/Terry	Charlie Clark*
Charley	Dylan Frederick*
Mary	Becca Hart
KT/Mrs. Spencer/Evelyn/Ensemble	Kim Kivens
Frank Jr.	Josiah Leeman••
Tyler/Judge/Ensemble	Ryan London Levin
Beth/Newsman/Dory	Britta Ollmann*
Jerome/Mr. Spencer/Newsman/Ensemble ...	Tod Petersen*
Understudy (KT/Mrs. Spencer/ Evelyn/Meg/Scottie/Ensemble)	Kaitlin Klemencic
Understudy (Ru/Photographer/ Minister/Joe/Terry/Jerome/ Mr. Spencer/Newsman/Ensemble)	C. Ryan Shipley
Understudy (Frank/Tyler/ Ensemble)	Wariboko Semenitari

•• Wed/Fri/Sat evenings • Sun/Thurs/Sat matinees

THE BAND

Trumpet	Elaine Burt†
Piano/Keys	Jason Hansen†
Woodwinds	Mark Henderson†
Drums	Paul Hill†
Electric Bass	Joan Griffith†

PRODUCTION TEAM

Director/Scenic Designer	Peter Rothstein**
Music Director	Jason Hansen†
Choreographer	Renee Guittar
Costume Designer	Rich Hamson
Lighting Designer	Grant E. Merges
Sound Designer	Eric Gonzalez
Dramaturg	Elissa Adams
Props Designer	Abbee Warmboe
Director of Production & Operations	Allen Weeks
Associate Production Manager	Kyia Britts
Production Stage Manager	Shelby Reddig*
Assistant Stage Manager	Z Makila*
Assistant Stage Manager	Austin Schoenfelder
Technical Director/ Assistant Scenic Designer	Bethany Reinfeld
Associate Technical Director	Eric Charlton
Lighting Supervisor	Jessica Mrovka
Audio Supervisor	Nicholas Tranby
Costume Supervisor	Amber Brown
Hair Consultant	Emma Gustafson
Scenic Charge	Sara Herman
Scenic Artists	Tyler Krohn & Lili Lennox
COVID Compliance Officer	Megan Fae Dougherty
Dresser	Ash Kaun
Light & Sound Board Operator Swing	Corinne Steffens
Dresser Swing	Bronson Talcott
Stage Management Swing	Megan Fae Dougherty*
Carpenters	Whitley Cobb & Alexis Wilcox
Electricians	Jay Claire, Dylan Payne, Zach Staads
Stitchers	Ash Kaun & Jeanne Schwartz

ASL/Audio Described Performance:

Thursday, Oct 6 at 7:30 pm

Open Caption Performances:

Friday, Oct 14 at 7:30 pm

Saturday, Oct 15 and Sunday, Oct 16 at 2:00 pm

Post-show Conversations:

Thursday evenings Sep 29, Oct 6, 13, 20, and 27.

Sunday afternoons Sep 25, Oct 2, 9, 16, 23, and 30.

*Member of Actors' Equity Association, the Union of Professional Actors and Stage Managers

**Member of SDC, the Stage Directors and Choreographers Society, a national theatrical labor union

†Member of Twin Cities Musicians Union, American Federation of Musicians

LETTER FROM THE DIRECTOR

Theater Latté Da's very first show, twenty-five years ago, was called *Lost in Boston*. My co-founder Denise Prosek and I put together a cabaret of songs that were cut from shows on the road to Broadway. In the golden-age of musical theater it was typical for shows to do an out of town try-out, usually in Boston, where they did rewrites and worked out the kinks before opening under the seering lights of Time Square. Our show had songs that were cut from well-known musicals like *Ragtime*, *Once on this Island* and *Pippin*, as well as songs that eventually rose from the cutting room floor to become American standards like "The Man I Love", "Let's Misbehave" and "Meadowlark". In retrospect, I love that our inaugural production was a celebration of the discarded, a champion for the underdog.

Merrily We Roll Along didn't have a try-out in Boston. Director Hal Prince and composer/lyricist Stephen Sondheim had already enjoyed huge success with *Company*, *A Little Night Music* and *Sweeney Todd*. They were the next generation of the great American musical, Broadway's golden boys; everyone assumed *Merrily We Roll Along* would be a surefire hit. The show began previews on October 8, 1981. The show clearly wasn't working; audiences were streaming out of the theater at intermission. The producers extended previews, giving Sondheim, Prince and book-writer George Furth a month to try and salvage the show, but they opened to abismal reviews and closed after just 16 performances.

Sondheim later said, "I speak for myself, but I suspect Hal would agree—that month of fervent hysterical activity was the most fun that I've ever had on a single show. It was what I had always expected the theater to be like. The unfortunate side effect was that although *Merrily* eventually survived, Hal and my partnership, echoing (the characters) of Frank and Charley's in the piece itself, did not."

Thanks to a fantastic original cast album the show was not forgotten. It built a faithful, almost cult-like following, and gratefully, some folks like to root for the underdog. Eventually Sondheim and Furth were given two opportunities to drastically rewrite the show. First under the sure-footed direction of James Lapine (*Into the Woods*, *Sunday in the Park with George*) in La Jolla in 1985, where they made significant structural changes. It was then produced in Leicester, England in 1992 where Sondheim and Furth finally got the show to where they wanted it. It won London's Laurence Olivier Award for Best Musical of the Year. That is the version of the show you will see tonight.

Merrily We Roll Along marks Theater Latté Da's 9th Sondheim production, starting with the area premiere of *Sunday in the Park with George* back in 2003. We went on to stage *Gypsy*, *Company*, *Into the Woods*, *Sweeney Todd*, *Assassins*, *Candide* and *A Little Night Music*.

We chose to launch our 25th anniversary season with *Merrily We Roll Along* because it is about a group of theater-makers and the pivotal choices they make in their lives. The show is a retrospective: it takes place over two decades, with the action of the musical moving backwards through time. The show ends at the beginning. It is 1957 and our heroes Frank and Charley vow to become creative partners. It is also the night they meet their best friend and greatest champion, Mary. They have all gathered on the rooftop of their New York tenement building to try and catch a glimpse of Sputnik. Frank says, "This moment that the three of us are sharing here together...Nothing's ever going to be the way it was, not ever again. Do you guys realize that now we are going to be able to do anything? I mean anything we ever dreamed of. What a time to be starting out. What a time to be alive." In that spirit we launch the 25th anniversary season of Theater Latté Da, which has become more than we ever dreamed of. What a time to be alive. I'm so glad you're here.



Peter Rothstein
Founding Artistic Director

Theater Latté Da is grateful for the generosity of our Production Sponsors,
Kent Allin & Tom Knabel.

ABOUT THEATER LATTÉ DA



THE CAST OF *TWELVE ANGRY MEN: A NEW MUSICAL* (2022). PHOTO BY DAN NORMAN.

Theater Latté Da is in its 25th season of presenting original and reimagined musical theater.

Theater Latté Da is the leading nonprofit professional theater in the Twin Cities that exclusively produces musical theater. Since its inception, TLD has presented 82 Mainstage productions, including 13 world premieres and 14 area premieres. Each has garnered critical acclaim and earned its artists and TLD a host of awards, including: seven IVEY Awards for overall excellence, National Endowment for the Arts, the Gabriel Award for Broadcast Excellence, the American Theater Wing National Theater Company Award and 2019 Drama Desk Award for Unique Theatrical Experience.

Our Mission

Theater Latté Da creates new and impactful connections between story, music, artist, and audience—exploring and expanding the art of musical theater.

Our Values

We believe in work that is bold, inclusive and collaborative; we act with integrity and gratitude.

BOLD We make bold choices in support of our mission and vision, both on and off stage. By illuminating the unseen, giving voice to the unheard, and empathizing with the unknown, we open eyes, ears and hearts.

INCLUSIVE We believe in creating an environment where a diverse group of voices are welcomed to fully participate. We are inspired and strengthened through equitable partnerships. We actively work to make musical theater accessible to everyone.

COLLABORATIVE We believe musical theater to be the most collaborative of art forms, incorporating music, drama, poetry, dance and design. We are inspired and strengthened through inclusive partnerships with artists, organizations and our diverse community, and embody a collaborative spirit in all we do.

INTEGRITY We hold ourselves to the highest standards of artistic and fiscal integrity. We are committed to honesty, equality and transparency in all aspects of our administration and art.

GRATITUDE We are grateful for our artists, audiences, donors, board and staff. We recognize that each individual plays an important role in this organization's success, and we actively seek out opportunities to acknowledge each person's contribution.

Our Commitment to Anti-Racism

Theater Latté Da is committed to recognizing, addressing, and opposing racism and discrimination in our work, art, community, and industry. We affirm our resolve to actively create an anti-racist arts organization demonstrating our commitment through action. We believe in the power and impact of equitable, inclusive environments and value the lived experiences of our collaborators. We will hold each other accountable to honor this commitment, in the rehearsal room, the office, the theater and the board room.

Our Land Acknowledgement

The Ritz Theater sits on the ancestral homelands of many First Nations Tribes, including most recently the Dakota, and the Anishinabe People. We gratefully, and humbly acknowledge the Native Peoples on whose Ancestral Homelands we gather, as well as the diverse and vibrant Native Communities who make their home here today.



Scan the QR code to learn more about Theater Latté Da's commitment to IDEA (Inclusion, Diversity, Equity, and Access).

THE ORIGINS OF *MERRILY WE ROLL ALONG*

The original *Merrily We Roll Along* was a 1934 play by George S. Kaufman and Moss Hart about disillusionment among a group of theatrical artists....the structure of the play moves backward in time, covering the years 1934 back to 1916. Each succeeding scene takes place at an earlier time than the preceding one, starting in the present and moving backward to the idealistic days of the protagonists' youth.

Merrily We Roll Along (the musical) would reunite (producer/director) Hal Prince and (composer/lyricist) Stephen Sondheim as collaborators for the first time since *Sweeney Todd*. (Their long-standing creative partnership also included the musicals *Company*, *Follies*, *Pacific Overtures*, and *A Little Night Music*). Prince collaborated with librettist George Furth and composer-lyricist Sondheim "on the structure of the play." Prince retained the structure from the original play for his musical. The theme was broadened to include the subject of friendship as well as the frustration of youthful ideals. He changed the time frame, going backward 25 years from 1976 rather than 1934.

The musical begins in 1976 and moves backwards to 1957. It covers a period during which America became fragmented, "me-centered," and enamored of instant celebrity.

Almost every scene unfolds in a public place. The cocktail parties, the courthouse steps with the omnipresent newscasters, the nightclub wedding, and, most dramatically, the studio where Frank and Charley's collaboration is torn asunder on national television: all are symbols of our loss of privacy.

"Musicals are popular. They're a great way to state important ideas. Ideas that could make a difference. Charley, we can change the world."

- Frank, Act II, Scene V

"There's so much stuff to sing."

- Frank, Act II, Scene V



Mr. Prince and Stephen Sondheim in 1981 at rehearsal of *Merrily We Roll Along*.
Credit: United Press International

Prince assured everybody who cared to ask that, although the leading character, Franklin Shepard, is a composer who became very successful at an early age, and both Prince and Sondheim also became successful at an early age, the characters were not modeled after the two collaborators.

"At no point did we say it's going to be about us.... but it certainly would have been about our times, because these are our times, these twenty five years are our 25 years."

- from Harold Prince: A Director's Journey by Carol Illson

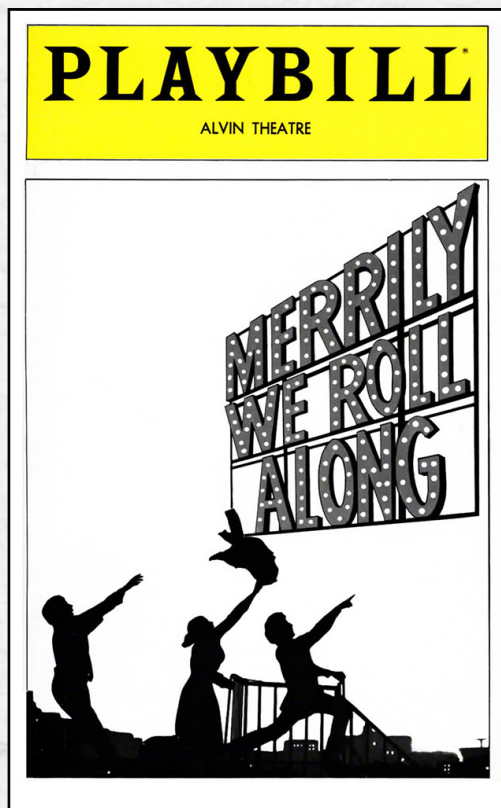
SONDHEIM ON *MERRILY WE ROLL ALONG*

The structure of *Merrily We Roll Along* suggested to me that the reprises could come first: the songs that had been important in the lives of the characters when they were younger would have different resonances as they aged, thus, for example, “Not a Day Goes By,” “a love song sung by a hopeful young couple getting married, becomes a bitter tirade from the wife when they get divorced, but the bitter version is sung first in the musical’s topsy-turvy chronology. This notion also gave rise to an unconventional use of melodic material: what were the vocal lines in their early lives could become accompaniments for the other songs in their later lives, undercurrents of memory, but the audience would hear the accompaniments first. All of this was not intended to be unconventional for its own sake or solely for my delight in manipulating musical ideas in puzzle fashion, but a method of holding the score together as more than just a disparate group of songs, which was characteristic of musicals based on the standard thirty-two-bar template. As always, content dictated form.

“Metaphorically, the old tunes linger, even if in fragmented forms, and if you tell a story backwards in order to make such a point (among others), the music and lyrics should not merely reflect but embody it.”

Kaufman and Hart had wanted to write about the deterioration of American idealism and the rise of capitalist greed in what they called “the deedless years” which followed the end of World War I into the Depression. In fact, their original title for the play was *Wind Up an Era*. In our transposition, we were writing about a generation’s idealistic expectation for the future, symbolized by the launch of Sputnik, and their deterioration into compromise and deceit, exemplified by Nixon and Watergate and the culminating Me Decade, as the 1970’s came to be labeled.

—From *Finishing the Hat: Collected Lyrics* (1954-1981) with Attendant Comments, Principles, Heresies, Grudges, Whines and Anecdotes by Stephen Sondheim



Playbill cover for the original Broadway production of *Merrily We Roll Along*.



(L-R): Jim Walton, Ann Morrison and Lonny Price in *Merrily We Roll Along*. Photo by Martha Swope.

TIMELINE

The lives of the characters in *Merrily We Roll Along* play out against the backdrop of an extraordinary period in American history. Their journey echoes the tumult, the promise and the pain of the 1960s and 1970s.

1957-1959

- President Dwight D. Eisenhower is inaugurated for his second term
- U.S. Congress approves the first civil rights bill since reconstruction with additional protection of voting rights
- **The Soviet Union inaugurates the “Space Age” with its launch of Sputnik, the world’s first artificial satellite**
- *My Fair Lady* wins the Tony Award for Best Musical
- Jet airline passenger service is inaugurated in the United States by National Airlines with a flight between New York City and Miami
- NASA selects the Mercury Seven, first astronauts of the United States: John Glenn, Scott Carpenter, Gordon Cooper, Gus Grissom, Wally Scare, Alan Shepard, and Deke Slayton

1960-1969

- **Four black college students from North Carolina Agricultural and Technical College in Greensboro, North Carolina stage a sit-in at a segregated Woolworth lunch counter, protesting their denial of service. 70,000 students, both white and black, over the next eight months, participate in sit-ins across the nation for Civil Rights**
- Democratic Party candidate John F. Kennedy is elected president, narrowly defeating his rival Richard Nixon
- Bay of Pigs invasion: an unsuccessful attempt to invade Cuba by Cuban exiles, organized and financed by Washington
- **President Kennedy announces his intention to place a man on the moon by the end of the decade**
- *Bye, Bye Birdie* wins Tony Award for Best Musical
- US compels Soviet Union to withdraw nuclear weapons from Cuba in what has become known as the Cuban Missile Crisis
- 3,000 troops quell riots, allowing James Meredith to enter the University of Mississippi as the first black student under guard by Federal marshal
- **The Civil Rights march on Washington, D.C. for Jobs and Freedom culminates with Dr. Martin Luther King’s famous “I Have a Dream” speech from the steps of the Lincoln Memorial. Over 200,000 people participated in the march for equal rights**
- A peaceful settlement to the land dispute between Mexico and the United States is enacted with the signing of the Chamizal Treaty, establishing the boundary in the El Paso Juarez Valley
- **President John F. Kennedy is assassinated; Lyndon Johnson becomes president**
- The United States steps up its military intervention in Vietnam
- **Beatlemania hits the shores of the United States**
- Civil Rights Act signed into law
- The Tonkin Resolution is passed by the United States Congress, authorizing broad powers to the president to take action in Vietnam
- The Voting Rights Act of 1965 is signed into law by President Lyndon B. Johnson
- **The first public burning of a draft card occurs to protest the Vietnam War**
- *The Sound of Music* wins Oscar for Best Picture

- U.S. warplanes begin their bombing raids of Hanoi and Haiphong
- **The Mattachine Society stages a “sip-in” to protest New York City’s LGBTQ discrimination policy in bars and restaurants.**
- The first Super Bowl is held in Los Angeles
- Thurgood Marshall is sworn into office as the first Black Supreme Court Justice
- **Civil rights leader Dr. Martin Luther King Jr. assassinated**
- **Presidential candidate Robert F. Kennedy is shot at a campaign victory celebration in Los Angeles**
- Richard M. Nixon is elected president of the United States
- US military presence in Vietnam exceeds 500,000 personnel
- **US astronaut Neil Armstrong becomes the first person to walk on the Moon**
- 250,000 people march on Washington, D.C. to peacefully protest the Vietnam War
- The internet, called Arpanet, is invented at the Department of Defense

1970-1976

- Paul McCartney announces the breakup of The Beatles
- **Earth Day signals the emergence of the grassroots environmental movement & EPA is established**
- The Kent State massacre marks the first time in US history students are killed by government forces in an anti-war gathering
- New York Times begins to publish the Pentagon Papers
- U.S. table tennis team visit to People’s Republic of China dubbed “Ping Pong Diplomacy”
- **Company wins Tony Award for Best Musical**
- **Shirley Chisholm becomes first Black woman to run for president in a major party**
- President Nixon is re-elected and makes a historic visit to China that leads to recognition of the communist government
- *The Godfather* wins Oscar for Best Picture
- Vietnam ceasefire agreement signed. U.S. withdraws its troops after the signing of the Paris Peace Accords
- Secretariat wins the Belmont Stakes by 31 lengths, winning the Triple Crown
- **Roe v. Wade legalizes a woman’s right to an abortion**
- President Nixon resigns in the Watergate scandal over a 1972 break-in at the Democratic Party headquarters
- Communist forces complete their takeover of South Vietnam, forcing the evacuation from Saigon of civilians from the United States and the unconditional surrender of South Vietnam
- Heiress Patty Hearst is captured and convicted after her year of kidnap and bank robbery in California
- **Wheel of Fortune premieres on television**
- The United States celebrates its Bicentennial
- Democratic candidate Jimmy Carter is elected president
- **Steve Jobs and Steve Wozniak co-found Apple**
- “Send in the Clowns” wins the Grammy for Best Song

BIOGRAPHIES

The Cast

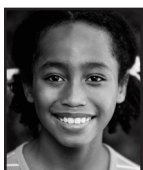


RONNIE ALLEN (RU/ PHOTOGRAPHER/MINISTER/ ENSEMBLE) THEATER LATTÉ DA: debut. THEATER: Ten Thousand Things: *Thunder Knocking on the Door*. UPCOMING: THEATER LATTÉ DA: *We Shall Someday*.



VIE BOHEME (GUSSIE) THEATER LATTÉ DA: debut. THEATER: Artistry: *Memphis*; Guthrie Theater: *West Side Story*, *Refugia*. DANCE: Camille

A. Brown and Dancers: *Ink*, *Black Girl Linguistic Play*; TU Dance: performed works by Dwight Rhoden, Uri Sands; August Wilson Center Dance Ensemble: performed works by Kyle Abraham, Darrell Grand Moultrie. MUSIC: Aux Trois Mailliez, Le Speakeasy (Paris, France), Amstrong (Casablanca, Morocco), backup for Stokley Williams' Sonic Healer Tour, Opening act for Little Dragon, Bilal. SELF-PRODUCED: CENTERPLAY, *Viva: BLACK [Volume 1.]*, *Viva:BLACK* a Live Theater Documentary SOLO PERFORMANCE: The Walker (Choreographer's Evening 2014/2015/2017), The Southern Theater (Vital Matters Dance Festival), Guthrie Theater (New Griots Festival) TRAINING: Point Park University's Conservatory of Performing Arts, the Ailey School. Listen2Vie.com @VieBohemeOfficial



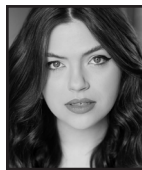
MATHIAS BRINDA (FRANK JR.) is a 5th grader at Lake Country Montessori in Minneapolis. Mathias studies acting and voice with Kristin Froebel and is

eager to make their Theater Latté Da debut. In addition to acting, Mathias studies ballet and contemporary dance at Minnesota Dance Theatre and especially enjoys participating in *Loyce Houlton's Nutcracker Fantasy* where they have performed as a cousin, toy, and The Littlest Mouse. When not on stage, rehearsing, or dreaming of being on stage, Mathias enjoys vintage clothes shopping and taking care of neighborhood pets.



REESE BRITTS (FRANK) THEATER LATTÉ DA: *Twelve Angry Men*, *Jelly's Last Jam*. THEATER: Chanhassen Dinner Theatres: *The Music Man*;

The Orway: *Smokey Joe's Cafe*, *Mamma Mia!*; Artistry: *Footloose*, *A New Brain*; The Guthrie Theater: *South Pacific*; The Jungle: *Miss Bennet: Christmas at Pemberley*; Lyric Arts: *Hairspray*, *RENT*, *Young Frankenstein*. TRAINING: BFA in Musical Theatre, University of Minnesota Duluth. Proud AEA member. UPCOMING: The Orway: *Beauty and the Beast*. reesebritts.com



CAMRYN BUELOW (MEG/SCOTTIE/ENSEMBLE) THEATER LATTÉ DA: debut. THEATER: Artistry: *Little Women*; Lyric Arts: *Smokey Joe's Cafe*; Emerging

Professionals Ensemble: *Pippin*; Duluth Playhouse: *Eurydice*, *Dracula*. TRAINING: B.F.A. in Musical Theatre, Dance Minor, University of Minnesota Duluth.



CHARLIE CLARK (JOE/ TERRY) THEATER LATTÉ DA: *Twelve Angry Men*. THEATER: Artistry: *The Bridges of Madison County*, *Mary Poppins*; Old Log

Theatre: *Guys and Dolls*; Tent Theatre: *Catch Me if You Can*; Porchlight Music Theatre Chicago: *Company*, *Merrily We Roll Along*, *Into the Woods*; Apple Tree Theatre: *Kiss of the Spider Woman*; Effective Theatre Chicago: *Sweeney Todd*; Phoenix Theatre Indianapolis: *Next to Normal*; Indiana Repertory: *On Golden Pond*; Ensemble Theatre Cincinnati: *Fun Home*, *Luna Gale*, *Hands on a Hardbody*, *Violet*, *Next Fall*, *Grey Gardens*, *Rapture Blister Burn*; Know Theatre Cincinnati: *See What I Wanna See*, *The Eight: Reindeer Monologues*; Carnegie Hall at Newport: *Dirty Rotten Scoundrels*, *Carousel*, *Oliver!*; New Stage Collective: *Sunday in the Park with George*, *The Goat or Who is Sylvia?*, *The Full Monty*, *Take Me Out*; Cincinnati Shakespeare Company: *Love's Labour's Lost*, *King Henry VIII*; Human Race Theatre: *The Sisters Rosensweig*. TRAINING: Acting BFA, Wright State University.



DYLAN FREDERICK (CHARLEY) THEATER LATTÉ DA: debut. THEATER: Broadway: *The Inheritance*; Off Broadway: *Boy Gets Violent* (Ars Nova ANTFFEST), *Summer Valley Fair* (New York Musical Theatre Festival); Yale Repertory Theatre: *Assassins*. TRAINING: BFA, University of Evansville. MFA, Yale School of Drama.



BECCA HART (MARY) THEATER LATTÉ DA: debut. THEATER: Jungle Theater: *Ride the Cyclone*, *The Wolves*, *Is Edward Snowden Single?*,

Small Mouth Sounds, *Miss Bennet*; Children's Theatre Company: *Annie*, *The Hobbit*; Artistry Theater: *Mary Poppins*, *Carousel*, *Music Man*, *Bridges of Madison County*, *Candide*; Lyric Arts: *Something Rotten*, *Urinetown*; Six Points Theater: *The Book of Vashti*; Stages Theater: *All American Boys*. TRAINING: Studied music and theater at St. Olaf College. UPCOMING: Jungle Theater: *Georgiana & Kitty: Christmas at Pemberley*; Children's Theatre Company: *An American Tail*.



KIM KIVENS (KT/MRS. SPENCER/EVELYN/ENSEMBLE) THEATER LATTÉ DA: *Bernarda Alba*, *NEXT, C.*, *Oliver!*, *Company*, *25th Annual...Spelling Bee*.

THEATER: Stages/Capri: *All American Boys*; Six Points Theater: *25 Questions for a Jewish Mother*, *The Chanukah Guest*, *What I Thought I Knew*, *Natasha and the Coat*, *Hershel and the Hanukkah Goblins*, *Church and State*; Children's Theatre Company: *Matilda*, *Dr. Seuss' The Sneetches: The Musical*, *Cinderella*; Hennepin Theatre Trust: (with Second City) *The Realish Housewives of Edina*, *The Doyle and Debbie Show*; Casting Spells Productions: *Disenchanted*; The Catalysts: *Shelly Bachberg Presents: Orange is the New POTUS: The Musical*, *Shelly Bachberg Presents: How Helen Keller and Anne Frank Freed the Slaves: The Musical*; Daleko Arts: *Urinetown*; Park Square: *Johnny Baseball*; Theater Mu: *Yellowface*; MMT: *Toxic Avenger*, *Dirty Rotten Scoundrels* (Lavender - Best Supporting Actress - Musical), *The Great American Trailer Park: The Musical*, *Jerry Springer: The Opera*, *Zombie Prom*. VOICE OVER TV/VIDEO: *Auto B*.

Good. VOICE OVER ONLINE: *SciGirls*.



JOSIAH LEEMAN (FRANK JR.) is a 2nd grader from New Hope making his Theater Latté Da debut! Previous roles include Young Shrek/Baby Bear in *Shrek*

The Musical this summer with Artistry Theater in Bloomington. He also studies voice and piano with Amanda Weis Studio, and has performed in many recitals over the past 2 years. Josiah just turned 8, and his favorite past-times include video games, making comic strips, being in nature and playing with his 1 year old puppy, Cosmo.



RYAN LONDON LEVIN (TYLER/JUDGE/ENSEMBLE) THEATER LATTÉ DA: *Twelve Angry Men*, NEXT Festival: *Scotland PA*. THEATER: History

Theater: *Runestone: A 'Rock' Musical*, *Christmas of Swing*, *Dirty Business: A Spy Musical*, *Teen Idol: The Bobby Vee Story*, *Orphan Train*; Yellow Tree: *Sherwood: The Adventures of Robin Hood*; Children's Theatre Company: *Cinderella*; Park Square Theater: *Jefferson Township Sparkling... Pageant*, *The Diary of Anne Frank*; MN Jewish Theater: *The Mikveh Monologues*; Artistry: *Bridges of Madison County*, *She Loves Me*, *Awake and Sing*, *The Last Five Years*, *Fiddler on the Roof*; Trademark Theater: *The Boy and Robin Hood*. FILM/TV: *I Was There* (History Channel). UPCOMING: Park Square Theater: *The Diary of Anne Frank*; Children's Theater Company: *An American Tail*.



BRITTA OLLMANN (BETH/NEWSWOMAN/DORY) THEATER LATTÉ DA: *Puttin' on the Ritz*, *Music to Our Eyes: Designers Sing Out*, *Bernarda Alba*, *Chicago*,

A Little Night Music, *Once*, *Ragtime*, *Into the Woods*, *Violet*, *Steerage Song*. THEATER: Broadway: *A Catered Affair*; Guthrie: *Sunday in the Park with George*; Asolo Repertory Theatre: *Ragtime*; Ordway: *Mamma Mia!*; The Old Globe: *A Catered Affair*; Chanhassen Dinner Theatres: *Sister Act* (2015, 2017), *Grease*; freeFall Theatre: *Daddy Long Legs*, *Red Velvet*. TRAINING: B.F.A. in Musical Theatre, New York University; M.A. in Teaching, Hamline University. Britta currently serves as the *Spotlight Education School Manager* with Hennepin Theatre Trust.



TOD PETERSEN (JEROME/MR. SPENCER/NEWSMAN/ENSEMBLE) THEATER LATTÉ DA: *A Christmas Carol* Petersen, *Gypsy*, *A Man of No Importance*, *The*

25th Annual... Spelling Bee, *King of Hearts*, *Parade*, *Oh \$#!% I'm Turning Into My Mother*. THEATER: Chanhassen Dinner Theatres: *The Music Man*, *Mamma Mia!*, *Newsies*, *Holiday Inn*, *Mid-Life!* *The Crisis Musical*, *Anything Goes*; Ordway Center for the Performing Arts: *The Sound of Music*; Children's Theater Company: *Diary of a Wimpy Kid*; Artistry: *The Drowsy Chaperone*; History Theatre: *Sweet Land*, *Teen Idol*; Illusion: *Two Weeks with the Queen*; Duluth Playhouse: *La Cage aux Folles*. UPCOMING: Chanhassen Dinner Theatres: Barry Glickman in *The Prom*.



KAITLIN KLEMENCIC (UNDERSTUDY) THEATER LATTÉ DA: debut.

THEATER: Theatre Elision: *A Flight of Short Musicals*; Skylark Opera Theatre: *Amahl and the Night Visitors*; Lyric Arts: *The Mystery of Edwin Drood*; Gilbert & Sullivan Very Light Opera Company: *Ruddigore*, *Princess Ida*, *Orpheus in the Underworld*, *The Gondoliers*, *Iolanthe*; Theatre in the Round: *Red Hot & Cole*, *Black Comedy*; Shoot the Glass: *Company*, *Into the Woods*. TRAINING: B.F.A. Theatre Performance and Theatre Education: Nebraska Wesleyan University. UPCOMING: Skylark Opera Theatre: *Amahl and the Night Visitors*.



WARIBOKO SEMENITARI (UNDERSTUDY) THEATER LATTÉ DA: *Twelve Angry Men*, NEXT Festival. THEATER: Underdog Theatre x Mixed

Blood: *How It's Gon Be* (World Premiere); Gremlin Theatre: *Samuel J and K* (Twin Cities Premiere); Great River Shakespeare Festival: *Romeo and Juliet*, *Great Expectations*; UMN/Guthrie BFA: *Jesus Hopped the A Train*, *Sueño*, *Kin*, *The Merchant of Venice*, *Junk*, *School for Lies*. TRAINING: The University of Minnesota Guthrie BFA Actor Training Program.



C. RYAN SHIPLEY (UNDERSTUDY) THEATER LATTÉ DA: *Twelve Angry Men*. THEATER: Children's Theatre Company: *Annie*; Artistry: *Memphis*, *A New*

Brain, *She Loves Me*, *Mary Poppins*, *The Drowsy Chaperone*, *Singin' in the Rain*, *On the Town*, *42nd Street*; Yellow Tree Theatre: *Sherwood*; Ordway: *Gotta Dance!*; Old Log Theatre: *Tenderly*, *The Rosemary Clooney Musical*, *Holidays with Bing*; Girl Friday Productions: *Idiot's Delight*; Skylark Opera: *Candide*; Paul Bunyan Playhouse: *Annie*. C. Ryan is also a director, choreographer and teaching artist. TRAINING: B. A. in Theatre, St. Olaf College. UPCOMING: Bing Crosby in *Holidays with Bing*, a radio fantasy created by C. Ryan at Artistry.

The Creative Team



PETER ROTHSTEIN (DIRECTOR & SCENIC DESIGNER) has directed 81 mainstage productions for Theater Latté Da, including 12 world premieres. Other

collaborations include the Guthrie Theater, the Children's Theatre Company, Minnesota Opera, Ten Thousand Things, Minnesota Orchestra, Utah Shakespeare Festival, Seattle's 5th Avenue Theater, the ZACH Theatre, Boston Lyric Opera, Florida Grand Opera, and Asolo Repertory Theatre. Peter was named the 2015 Artist of the Year by the Star Tribune, Theater Artist of the Year by Lavender, and Best Director by City Pages. He has received nine Ivey Awards and a New York Drama Desk Award for *All Is Calm*. He has been awarded grants and fellowships from the National Endowment for the Arts, Theatre Communications Group, the Minnesota State Arts Board and the McKnight Foundation. He holds a B.A. in Music and Theater from St. John's University and a Master of Fine Arts in Directing from the University of Wisconsin-Madison. www.Peter-Rothstein.com.



JASON HANSEN (MUSIC DIRECTOR) THEATER LATTÉ DA: *Jelly's Last Jam* (orchestrations), *Bernarda Alba*, *Hedwig and the Angry Inch*, *A Little Night Music*,

BIOGRAPHIES

Once, Assassins, C., Into The Woods, Our Town, Aida; NEXT: *The Last Babushka, A Child's Christmas In Wales*; THEATER: Children's Theater Company: *Cinderella, How The Grinch Stole Christmas, Dr. Seuss's The Sneeches*; Mixed Blood Theater: *Passing Strange, Next To Normal, Avenue Q*; Guthrie Theater: *Guys and Dolls, Othello*; History Theater: *Sweet Land*; Stages Theater Company: *Tuck Everlasting*; Theater Mu: *Twelfth Night, A Little Night Music*; Chanhassen Dinner Theaters: *Newsies*; Ten Thousand Things: *Romeo & Juliet*; Arkansas Repertory Theater: *The Gift Of The Magi*; Northern Sky Theater, Illusion Theater, Artistry, TigerLion Arts, Open Eye Figure Theater, Jungle Theater, the MN Fringe Festival, the Hennepin Theater Trust; Alive & Kickin' (Music Director, Associate Director); AWARDS: 2018 MN Theater Award (Latté Da's Assassins)



RENEE GUITTAR

(CHOREOGRAPHER)

CHOREOGRAPHY:

Regional Theater:

Chanhassen Dinner

Theatres: *Footloose*; Collide

Theatrical Dance Company; Educational Theater: Hill-Murray High School, North Saint Paul High School and Two Rivers High School, Gustavus Adolphus College. PERFORMANCE: THEATER LATTÉ DA: *Heroic Acts of Music*; THEATER: Ordway: *In The Heights, A Chorus Line, Gotta Dance! Cabaret*; Chanhassen Dinner Theatres: *Beauty & The Beast, Camelot, Grease, Newsies, Holiday Inn, Mamma Mia!*; Guthrie: *The Music Man*; Old Log Theater: *The Wedding Singer*; Company member of Collide Theatrical Dance Company since 2013. TEACHING: Ashley Ballet Arts Academy, Cowles Center. TRAINING: Gustavus Adolphus College. Member of Actor's Equity Association.



RICH HAMSON (COSTUME

DESIGNER) THEATER

LATTÉ DA: *La Bohème, Spring Awakening, Cabaret, C., The Light in the Piazza, Gypsy, Floyd Collins, Man of*

La Mancha, A Christmas Carole Petersen, Evita. THEATER: Chanhassen Dinner Theatre, resident costume designer with over 32 productions; Children's Theatre: *Annie, Shrek, Mulan, Disney's High School Musical*; The Guthrie: *Other Desert Cities, Lake Hollywood,*

Thief River, A Body of Water; The Minnesota Opera: *Così fan tutte*; Illusion Theatre: *Snow, The Warrior Within*; The Jungle: Orson Wells presents *Moby Dick, The Blue Room, Souvenir*; Park Square Theatre: over 15 productions including *A Tale of Two Cities, The Heiress* and many more.



GRANT E. MERGES

(LIGHTING DESIGNER)

THEATER LATTÉ DA: *La Bohème, Puttin' On The Ritz, Once*. THEATER: Jungle Theater: *Hand to God*;

Penumbra Theatre: *Black Nativity* 2012-2017; Ivey Awards 2014-2017; Alive & Kickin' 2010-present; TaikoArts Midwest Ensō Daiko 2018-2019; Stages Theatre Company: *The North Star, James and the Giant Peach, The Hobbit*; Artistry: *The Music Man, Noises Off, The Drowsy Chaperone*; Minneapolis Musical Theatre: *Night of the Living Dead, The Story of My Life, Big River*; Paul Bunyan Playhouse: *Young Frankenstein, Footloose, Little Shop of Horrors*; GREAT Theatre: *Grease, Newsies*; PRIME Productions: *The Roommate, Little Wars*; Lyric Arts: *Revenge of the Space Pandas*; River Valley Dance Academy: *The Snow Queen, The Nutcracker*; University of Northwestern: *The Lightning Thief, Peter Pan, Into the Woods*; Century College: *HAIR, The Rocky Horror Show, Macbeth*; Concordia University: *Die Fledermaus*. EDUCATION: MFA, Minnesota State University, Mankato.



ELISSA ADAMS

(DRAMATURG) THEATER

LATTÉ DA: *C., Lullaby, Assassins, Five Points, Underneath the Lintel, Once, A Little Night Music,*

Hedwig and the Angry Inch, To Let Go And Fall, Chicago, Bernarda Alba, Jelly's Last Jam, Twelve Angry Men: A New Musical, NEXT Up & NEXT Festival (Producer). THEATER: Director of New Play Development at Children's Theatre Company (1998- 2017); Sundance Theatre Lab; Playwrights' Center; TRAINING: MFA in Dramaturgy, UC San Diego.



ABBEE WARMBOE (PROPS

DESIGNER) THEATER

LATTÉ DA: *Twelve Angry Men, Jelly's Last Jam, La Bohème, Bernarda Alba, All Is Calm, Chicago, To Let Go*

and Fall, Hedwig and the Angry Inch, A Little Night Music, Once, Underneath the Lintel, Five Points, Assassins, Man of La Mancha, Six Degrees of Separation, Peter and the Starcatcher, A Christmas Carole Petersen, Ragtime, Gypsy. THEATER: Guthrie Theater: *Emma, Sweat, Vietgone*; History Theater: *Runestone, Gordon Parks*; Penumbra Theater: *Thurgood*; Mixed Blood Theater: *Animate*; Old Log Theater: *The Play That Goes Wrong*; Pillsbury House: *What to Send Up When It Goes Down*; Ten Thousand Things Theater and Freestyle Films: *Handprints*; Theater Mu: *Today Is My Birthday*. Other recent collaborations include Chanhassen Dinner Theater, Interact, MN Opera, Ordway Center, Park Square Theater, Penumbra Theater, University of MN. Abbee is a 2020-2021 McKnight Theater Artist Fellow at the Playwrights' Center.

SHELBY REDDIG (PRODUCTION STAGE

MANAGER) THEATER LATTÉ DA: *Jelly's*

Last Jam, La Bohème, Puttin' on the Ritz.

THEATER: Children's Theatre Company: *Snow White, The Hobbit*; MN Opera: *Albert Herring*; Mixed Blood Theatre: *Prescient Harbingers, The Mermaid Hour: Remixed*;

Perseverance Theater: *A Christmas Carol*;

Jungle Theater: *Fly By Night: The Musical*;

Stages Theater: *Charlotte's Web*. TRAINING:

BA in Theatre and English from St. Olaf

College.



Z MAKILA (ASSISTANT

STAGE MANAGER) THEATER

LATTÉ DA: *Twelve Angry*

Men The Musical, La

Bohème. THEATER: MN

Orchestra: *Joyful Echoes,*

Home For the Holidays; Ten Thousand Things:

Thunder Knocking on the Door, Comedy of

Errors; Theatre Elision: *Islander, First Lady*

Suite, A Flight of Short Musicals, Ghost Quartet,

If the Spirit Moves. TRAINING: self-taught

Stage Management; Individually Designed

Interdepartmental BA Degree in Viola

Performance, Creative Writing & Psychology

from the University of Minnesota — Twin

Cities.

AUSTIN SCHOENFELDER (ASSISTANT STAGE

MANAGER) THEATER LATTÉ DA: (Assistant

Stage Manager) *Jelly's Last Jam*. THEATER:

Chanhassen Dinner Theatres: (Spotlight

Operator) *Footloose, The Music Man*; Park

Square Theatre: (Asst Stage Manager) *Holmes*

and Watson, (Run Crew) The Rocky Horror

Show; The Duluth Playhouse: (Asst. Stage Manager) *Sweeney Todd*; The Round Barn Theatre: (Production Stage Manager) *Mamma Mia*, *Plain and Fancy*, *Annie*; Zenith City Horror: (Stage Manager) *Hedwig and the Angry Inch*; Prairie Repertory Theatre: (Stage Manager) *The Sound of Music*, *Smokey Joe's Cafe*, *Hairspray*, *Sister Act*. TRAINING: BFA in Technical Theatre from the University of Minnesota Duluth.



BETHANY REINFELD
(TECHNICAL DIRECTOR/
ASSISTANT SCENIC DESIGNER)

describes Technical Direction as “Building worlds for characters to come to life in”. She holds a M.F.A in Theater and Drama with a specialization in Technical Direction from UW - Madison. She also has a B.F.A. in Design Tech with an emphasis in Technical Direction and Scenic Design from UMD. She doesn't get to Scenic Design as much these days and has enjoyed the opportunity to Assistant Design for Peter. She has worked with Mixed Blood Theater, Normandale Community College, Yellow Tree Theater, Jungle Theater and Sesame Street Live/VEE Corporation to list a few.

NICHOLAS TRANBY (AUDIO SUPERVISOR)
THEATER LATTÉ DA: *Twelve Angry Men*, *Jelly's Last Jam*, *La Bohème*, *All Is Calm*, *Once*, *Chicago*, *Hedwig and the Angry Inch*, *Candide*, *A Little Night Music*, *Man of La Mancha*, *Peter and the Starcatcher*, *Ragtime*, *Gypsy*, *Assassins*, *Five Points*. THEATER: Sound, Video and Lighting Associate at Children's Theatre Company for 4 years including *Shrek: The Musical*, *Pinocchio*, *Alice in Wonderland* and *Robin Hood*; Head Audio Engineer for international tours of *The Wedding Singer* and *The Wizard of Oz*; Other venues have included Guthrie Theater, Williamstown Theatre Festival, and Cincinnati Playhouse in the Park. TRAINING: The College-Conservatory of Music at University of Cincinnati.

JESSICA MROVKA (LIGHTING SUPERVISOR)
THEATER LATTÉ DA: *Twelve Angry Men*, *Jelly's Last Jam*, *La Bohème*, *All is Calm*.
VSTAR ENTERTAINMENT: Electrics Shop Manager (2016-2020): *Trolls Live!*, *Paw Patrol Live!*; *Race to the Rescue*, *Paw Patrol Live!*; *The Great Pirate Adventure*, *Nick Jr. Live!*
VILAR PERFORMING ARTS CENTER:

Master Electrician/House Lighting Designer (2013). VEE CORPORATION: Electrician/Rigger: *Sesame Street Live! 1,2,3 Imagine and Elmo's Green Thumb*, *My Little Pony Live!* TRAINING: B.A. in Theater from the University of Wisconsin-Green Bay.



AMBER BROWN (COSTUME SUPERVISOR) THEATER LATTÉ DA: *Twelve Angry Men*, *Jelly's Last Jam*, *La Bohème*, *All is Calm*.
THEATER: Mixed Blood

Theatre: *Interstate*, *Autonomy*, *Corazón Eterno*, *Agnes Under the Bigtop*; Old Log Theater: *The Play That Goes Wrong*; Pillsbury House Theatre: *Great Divide III: She Persists*, *West of Central*, *Great Divide II: Plays on the Politics of Truth*, *Almost Equal To*, *The Great Divide: Plays for a Broken Nation*; Park Square Theater: *Aubergine*; Gremlin Theater: *Journey's End*; Bucket Brigade: *Life Goes On*; Full Circle Theater: *Under This Roof*; Loudmouth Collective: *Testament of Mary*; 7th House Theater: *Rhinoceros*; Macalester College: *Letters Home*, *Distracted*, *12 Ophelia's*, *Accidental Death of an Anarchist*.

Special Thanks

Century College
The Crane Theater
Phil Gainsley
Hans Gasterland
Guthrie Theater



Theater Latté Da is a proud partner of the Northeast Minneapolis Arts District



CHARLEY



MARY



FRANK

COSTUME DESIGN BY RICH HAMSON

The Real Deal.

The Anchor



Fish & Chips



Fully authentic fish & chipper dishing up all fresh ingredients with Alaskan Cod & hand-cut chips.

Also enjoy Shepherds Pies, grass-fed burgers, meat & veggie pasties, and more.

Proudly serving Liberty School & Sean Minor Cabernet & Chardonnay along with some great Irish beers: Guinness: Smithwicks: Magners, Harp & more.

RESERVATIONS REQUIRED

302 13th Ave NE., Minneapolis
www.theanchorfishandchips.com

CONNECT WITH US!



@TheaterLatteDa



JELLY'S LAST JAM (2022). PHOTO BY DAN NORMAN.

iware
northeast

\$50 off
complete pair purchase
with this ad



339 13th Ave. NE
Minneapolis, MN

iwarenortheast.com

612.617.1070

fine eyewear

CELEBRATING
25 YEARS

THEATER
LATTÉ
DA
THEATER MUSICALLY

As we enter our 25th anniversary season, we're taking a look back at the last 25 seasons from Theater Latté Da's earliest days at the intimate Loring Playhouse to award-winning sold-out shows here at the Ritz Theater. Follow along this season as we highlight our productions from 1998 to present in each of our programs throughout the year!

THE FIRST FIVE SEASONS

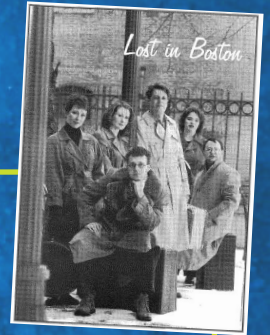
* World Premiere **Area Premiere

SEASON 1 • 1998-1999

LOST IN BOSTON* | Loring Playhouse | 1998

OH S#!%o, I'M TURNING INTO MY MOTHER* | Loring Playhouse | 1998

OH S#!%o, I'M TURNING INTO MY MOTHER | Duplex, New York City | 1999



SEASON 2 • 1999-2000

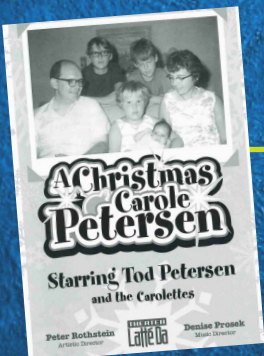
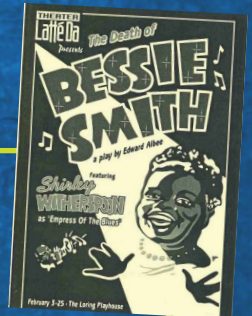
SONGS FOR A NEW WORLD** | Bryant Lake Bowl | 2000

OH S#!%o, I'M TURNING INTO MY MOTHER | Bryant Lake Bowl | 2000

SEASON 3 • 2000-2001

A CHRISTMAS CAROLE PETERSEN* | Loring Playhouse | 2000

THE DEATH OF BESSIE SMITH** | Loring Playhouse | 2001



SEASON 4 • 2001-2002

THE RINK** | Loring Playhouse | 2001

A CHRISTMAS CAROLE PETERSEN | Loring Playhouse | 2001

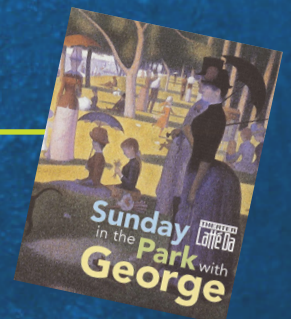
NEW YORK MUSICAL SHORTS* | Loring Playhouse | 2002

SEASON 5 • 2002-2003

WINGS** | Loring Playhouse | 2002

A CHRISTMAS CAROLE PETERSEN | Loring Playhouse | 2002

SUNDAY IN THE PARK WITH GEORGE** | Loring Playhouse | 2003



THANK YOU FOR YOUR GENEROUS SUPPORT OVER THE PAST 25 SEASONS.
PLEASE CONSIDER A GIFT TODAY AT LATTEDA.ORG/DONATE AND HELP SUPPORT THE NEXT 25!

THEATER LATTÉ DA DONORS

Thank you for your commitment to our 25th season. Theater Latté Da is one of only a few theaters in the country dedicated solely to producing and presenting new and adventurous musical theater that speaks to contemporary audiences and advances the art of musical theater. We truly could not do this without the generosity of our many individual and institutional donors. Thank you for your support.

INSTITUTIONAL SUPPORT

This activity is made possible by the voters of Minnesota through a Minnesota State Arts Board Operating Support grant, thanks to a legislative appropriation from the arts and cultural heritage fund.

MCKNIGHT FOUNDATION



The Wenger Foundation

NAMT
NATIONAL ALLIANCE FOR
MUSICAL THEATRE



TARGET



Elmer L. & Eleanor J.
Andersen Foundation



Ameriprise
Financial



NATIONAL
ENDOWMENT for the ARTS
arts.gov

The Scrooby Foundation

Prospect Creek
Foundation



Allianz

THE SHUBERT
FOUNDATION INC.

The Nara Fund

Elizabeth C. Quinlan
Foundation Inc.

HGA



INDIVIDUAL SUPPORT

Theater Latté Da's mission is to create new and impactful connections between story, music, artist, and audience by exploring and expanding the art of musical theater. We are guided by our values that our work be bold, inclusive and collaborative, and strive to act with integrity and gratitude both on and off the stage. By illuminating the unseen, giving voice to the unheard, and empathizing with the unknown, Theater Latté Da strives to open eyes, ears, and hearts.

Please consider a tax-deductible contribution to Theater Latté Da today and join us in bringing great musical theater to life. Learn more about support opportunities at latteda.org/ways-to-give or email hilary@latteda.org for more information.

Grand Finale (\$25,000 and above)

Kent Allin and Tom Knabel
Carol and Kim Culp
C. Curtis Dunnavan Fund
Kathy and Allen Lenzmeier

Marti Morfitt and Patrick Weber
Rita and Ben* Olk
Kathleen and Paul Rothstein

Curtain Call (\$10,000-\$24,999)

Anonymous
David Feroe and Linda Svitak
Nancy Jones
Penny Meier
Jennifer Melin Miller and David Miller
Cara Sjodin and Scott Stensrud

John Sullivan
David A. Wilson and Michael J. Peterman
Fremajane Wolfson
Margaret and Angus* Wurtele
The Thomas and Julianne Youngren
Foundation

Eleven O'clock Number (\$5,000-\$9,999)

Jan and Greg Aplin
Priscilla Brewster
Jane and Ogen Confer
Ingrid and Chris Culp
Ron Frey and Steven Thompson
The Dean Greenberg Family Fund in honor
of Fremajane Wolfson

Sandra and Edmund Hall
Lisa and Dan Hoene
Dennis and Nora Hunchar
Christine Larsen and Scott Peterson
Barbara Larson
Margery Martin and Dan Feidt
David Pote and Linda Tapsak

Philip Randall
Ken & Nina* Rothchild
Ann and Pat Ryan
Kevin Winge and Kevin Shores
Patricia Zalaznik

**In remembrance*

Show Stopper (\$1,500-\$4,999)

Anonymous (2)
 Elissa Adams and Michael Margulies
 Albrecht Family Foundation
 Jerald Barnard
 Barbara Brin and John Beal
 Les Bendtsen and Rick Buchholz
 Kris Berggren and Ben Olk III.
 Ray DeSpiegler and Michael Birch
 Al Bradley
 Jimmy Burnett
 Kathleen and Paul Campbell
 Gretchen and David Crary
 Fran and Barb Davis
 Thomas* and Mary Lou Detwiler
 Rob Dingmann and Ethan Reynolds
 Joe Dowling and Siobhán Cleary
 Carol M. Downie and Gregory J. Thomas
 Nathan Dungan and Susan Hawks
 Mary Anne Ebert and Paul Stembler
 Karla Ek Dahl and Peter Hutchinson
 Meghan and Sean Elliott
 Steve Euler and Nancy Roehr
 Dr. Lynn Glesne
 Diane Harder and Thomas Eckstein
 Lorraine R. Hart

Jean and Jim Hartman
 Jeffrey D. Bores and Michael Hawkins
 Margie and Tom Hebig
 Sandy and John Hey
 Addicks Hoch Fund of The Minneapolis Foundation
 Joe Holmers
 Peter Hyman
 Richard Ihrig
 Sandi and Jim Jensen
 Al Kvaal
 Jane Lansing
 Kate and Greg Lawson
 Carol Lichterman
 Kerry Sarnoski and Susan Lowum
 Pat and Sara Mack
 Mary and Mark Maher
 Drew Mattson
 James Lockhart and Janie Mayeron
 Linda and Jim Milow
 Tom and Conchy Morgan
 Curt D. Nelson
 Neil Neumann and Sandy Spidel
 Neumann
 Mary Weber Nord

Stan Kolden and Glyn Northington
 Jennifer and Jay Novak
 James Olson
 Jim Payne
 Patricia Ploetz
 John Polta and Anne Tuthill Polta
 Prospect Creek Foundation
 Gene and Pat Radecki
 E. Thomas Binger and Rebecca Rand Fund of The Minneapolis Foundation
 Maria and David Reamer
 Gary Reetz
 Christopher Bineham and Harrison David Rivers
 Peter Rothstein and Omar Guevara Soto
 Colleen Ryan
 Marjorie and Mark Schroeder
 Susan Stabile and David Drueding
 Ann and Tom Stanley
 Lorri Steffen and Paul Zenner
 Jay Harkness and Jean Storlie
 Brian and Carrie Svendahl
 Rabindra Tambyraja, MD
 Bill Underwood and Chris Everett

Libby and John Utter
 Dianne Van Tasell and Steven Eggmann
 Erin Vannelli
 Bill Venne and Douglas Kline
 The LTC Janis Verruso Charitable Fund
 Paula Vesely
 Gregory L. Vilmo
 David C. Warner
 Marjorie and Irving Weiser
 Carol and Tom Windfeldt
 John and Karen Winkelman
 Dick and Diane* Wright
 David Young and Edward Williams, Jr.
 Peter Zenner

**In remembrance*

Entr'acte (\$500-\$1,499)

Anonymous
 Mary Alberts
 Theresa Alewine
 Angelica Family Charitable Fund
 Scott Appelwick and Edward Sootsman
 Stuart Appelbaum and Jean King
 Ward and Kathleen Armstrong
 Annette Atkins
 Marcia Aubineau
 Stan and Cindy Bandur
 Sarah and Mick Bauer
 Mary Beidler Gearen
 Thomas Beimers
 Patricia Beithon
 Patricia Benson
 Ruth Ann and Jim Benson
 David and Chelsea Berglund
 David and Janet Berry
 David Bjork and Jeff Bengtson
 Susan S. Boren and Steve King
 William and Rita Bourne
 Mary Brady
 Judith and Arnie Brier
 Ann Brownlee
 Shawn Bryant and Michael Grouws
 Stephen Bubul
 Jeannie Campbell
 Virginia and Stuart Campbell
 Peter Carlsen and Sylvia Frank
 William and Andrew Collis-Prather
 Dale Connelly and Nancy Hedman
 Colleen Cooper
 Tiffany Cooper-Allen
 Carl Deeken
 James Detmar
 David and Margaret Dines
 Gerald Dove
 Jane Doyle
 Jennifer Patti Duffy and Sean Duffy
 Joe and Lois Duffy
 Sharon Engel
 John J. Erickson
 Kurt and Sarah Erickson
 Lucas Erickson
 Larry Espel and Cyndi Hasselbusch
 Kittie Fahey
 David Ferris

Dennis K. Findley
 Stephen Fischer
 Gerald Foley
 Matt Fulton
 Barbara and Bob Gaertner
 Lisa Gehrig
 Janice Gepner and Eric Newman
 Brian Gilligan
 Jim Gindorff
 Ben and Patty Grabski
 Christine and Bill Griffith
 Marnix and Mary Guillaume
 Roger Haase and Michael Birdsall
 Kath Hammerseng and Mo Kennedy
 Jo-Ida C. Hansen
 James Haskins
 Kate Haugen and Carlton Hunke
 Donald Helgeson and Sue Shepard
 John Hering and Matt Vonk
 Christopher Hermann and Brian Pietsch
 Joanne and Allen Hinderaker
 Ann Jalonen and John Moulder
 Bernadette and Jeffrey Janisch
 Patricia Johnson and Kai Bjerkness
 Steve Johnson and Susan Iverson
 Sylvia and Sam Kaplan
 Miriam and Erwin Kelen
 Tim Kellar
 Ryan Daro and Ryan Kielbasa
 Matt Kiser and Chris Nichol
 Steve and Candace Koslow
 Deirdre and Wes Kramer
 Sue Kratsch
 Suzanne Tacheny Kubach
 James Kunz
 Greg Kvam and Pat Johnson
 Rebecca and Andrew Lahl
 Sally Lannin
 Jane Letourneau and John Frey
 Diana and Kenneth Lewis
 Jeff Lin
 Rebecca Loader and Michael Ritchie
 Jon Michael Logue
 Larry Loll
 Dennis Louie
 David and Marilee Mahler
 Bob and Deb Mans

Susan L. Maples
 Ruth B. Markowitz
 Kathleen and Frank Martin
 Paul and Julie Mattson
 Susan McCarthy
 Robert and Polly McCrea Family Fund of The Minneapolis Foundation
 Lisa McLean
 Ann Harrington and Chris McPartland
 Mary H. and J. Milo Meland
 Family Fund of The Minneapolis Foundation
 Gretchen Alberts Mellies
 Douglas and Cindy Merrigan
 Sonny and Amy Miller
 Marianne McGrath Mills and Steven A. Mills
 Jodi and Mike Mooney
 Alfred P. and Ann M. Moore
 David and Leni Moore Family Foundation
 Bridget and Sam Morehead
 Kim and David Motes
 Joanne Mullen
 Peter and Karla Myers
 Nicholas Naumann and Joe Chadwick
 Katherine J. Nevins
 Nicholson Family Foundation
 Pondie and Mark Taylor
 Karle and Diane Nolte
 Ann Novacheck and Skip Durocher
 R&D Oliveria Foundation
 Ella and Lee Ostendorf
 Sandra Overland
 Philip Oxman and Harvey Zuckman
 Micheal and Mary Parenteau
 Jeanne and James Peltier
 Carol Peterson
 Daniel Peterson
 Deanna Phillips
 Shannon Pierce and Rachael Kroog
 Nick and Judy Priadka
 Nancy and James Proman
 Denise Prosek and Milton Ferris
 John and Elizabeth Quinn

Quiring Family Fund of The Minneapolis Foundation
 Mariana Quiroga
 James and Susan Ramler
 Gary and Susan Rappaport Family Charitable Fund
 Laura E. Rathe
 Megan Reardon
 John Seeger Reay and Karen Hanson
 Kenneth and Beth Roering
 Jaime A. Roman and Jim Bernier
 Bud and Kathy Rooney Family Fund
 Tom Rothstein
 Peggy and Bill Roush
 Rodney Rowe
 Jean Ryan
 Sandra Ryan
 Susan and John Ryan
 Sue Salmela and Paul Burnett
 Mary L. Sandberg
 Linda and Steven Sandvig
 Elaine Gaston and Mark Scannell
 Paul Schumann
 Miriam Seim
 Tom Senn and Woody Manion
 David and Patricia Shaffer-Gottschalk
 Daniel and Emily Shapiro
 Gale Sharpe
 Kris Lang-Shasky and John Shasky
 Michelle Sherman
 Jeff Slywka
 Roxanne and Bill Soth
 Russell Kaplan and Elisa Spencer-Kaplan
 Lynne Stanley
 Ellen Stanley
 Toya Stewart Downey
 Marcia and John Stout
 Dana and Stephen Strand
 Sulasalmi Fund of The Minneapolis Foundation
 M J Sullivan
 Kari Groth Swan
 Jean Taylor
 Sue Thielke
 Todd and Laurie Macgregor
 Lori Tolonen and Nell Bean

INDIVIDUAL SUPPORT

Jeanne Voigt
Michael Wagner
Cathy and Stan Waldhauser
Peter Wampole
Mark Williams

Paige Winebarger
Michelle Woster and Peter Quale
Peter and Sue Wyckoff
Ann Wynia
Julia M. Yager

Jane Zilch
Wayne Zink and Christopher Schout
Margaret Zverinova

Overture (\$100-\$499)

Anonymous (12)
Mary Aamoth
Frank and Barb Abramson
Sharon Adams
Tom and Cindy Adamson
DeEtte Allen
Grant Amadio
Carrie A. Andersen
Amy Andersen
Renee and David Anderson
Joe Andrews and Scott Benson
Greg Anthony
Nancy and Ben Antin
John Arechar
Jennifer and Joseph Armitage
Brian Asleson
Jenn Baese
William Bahl
Michael Bahr and Morrie Hartman
Georgia Bailey
Douglas Baldwin
John Bale
Maria Bales
Thomas Barber
Karen Barstad
Daniel Baseman
Cheryl Bates
Mary and Bruce Bean
Robert and Mary Beck
Dan Berg and Welcome Jerde
Joan Berg
Tom and Margit Berg
Lindsay Berger
Scott Berger
Brent Berheim
Judy and Dennis Berkowitz
Angela and George Bernhardt
Susan Bernstein
Bill Bertram
Tim and Beth Beutell
Chris Bewell
Marilyn Bierden
Judith Bird
Paul and Marcia Bjerke
Ann Blatti and David Gibson
Margarie Boler
Allen Borcharding
Carol Bossman
John and Kate Boyle
Larry J. Brandts
Craig Brattebo
Mary Brauer
Carol and Steve Broback
Joanne and Drew Brockington
Carson Brooks
Peter Brosius and Rosanna Staffa
Cheryl Brown
Cynthia Brown
Sally W. Brown
Natasha Brownlee
Carol and Richard Brozic
Philip and Carolyn Brunelle
Carol Bufton
Sheryl and Mike Burkhardt
Russ Bursch and Lee Mauk
Steve Bye
Scott Cabalka
Karin and Frank Canfield
Jane Carlstrom
Karen and Richard Carney
Clara Caruso
Sarah and David Caruso
Marco Cervantes
Cynthia Chapman
David Chin
Sandy Doll and Ron Christenson
Angela Christy

Braden Claassen
Paul and Kathleen Coate
Grace Cogan
Ruth Colby
Cynthia F. Collins
Margie Commerford
Mary and Mike Conklin
Geoffrey Conklin
Gisela Corbett
Francine Corcoran
Jeanne Corwin
Neil J. Cosgrove
Gary Costello
Amy Cox and Charles Vanek
James Crider
Christine Cundall
Julie Curtsinger
Maggy and Tom D'Onofrio
Lynda Dahl
Steve Dahlberg
Audrey Dammer and Jim Boyer
Thomas and Mary* Darnall
Robert and Charme Davidson
Donna L. Davis
Tom E. Davis
Kathryn and Larry Decker
Shauna Dee
Dianne Del Giorgio
Dan Delaney
Virginia and John Dell
Dennis Delude-Nafus
Sandra Demland
Bob and Lori Derus
Beth Desotelle
Lisa Dethloff
Lisa Deutsch and Jeffrey Wepplo
Sunny Didier
Marcus and Cynthia Dilliard
James and Sharon Dimond
Sue Dosal
Hillary Drake
Natalia Dreizin
Charles P. Driscoll
Craig Dunn
Doug Dunning
Charla and Jeffrey Eccles
Lynn Eckerline
Linda Eckman
Dorothy Edelson
Emilee Elofson
Thomas Emmert
Maureen Engelhardt
Robert Englund
Evy Engrav
Denise Johnson and Karl Erickson
Hope Esparolini
Chris Estee
Mark and Kelly Evans
Clarence and Molly Falk
Becky and Damon Farber
Sheila Faulkner and Russ McPherson
Douglas Federhart
Patricia Ferrieri
Sara and Karl Fiegenschuh
Stephen Field and Stephen Herzog
Chad Fitch and Denisea Fitch-Elsola
Betsy and Keith Ford
Kelli Foster Warder
Jinnet Fowles
Ron and Barb Fraboni Family Fund
Barbara Frame
Robert Frame
Craig Freeman
Mary Freeman
Joan Freese
Jan Frisch
Heather and Bill Froehlich

Johnnie Fulton
Amy and Harry Funk
Patricia Gaarder
Fred and Gael Gardner Fund of
the Princeton Area Community
Foundation
David Gardner and Ronda Willsher
Karen J. Garvin
Kathy and Steve Gaskins
Leland and Beverly Gehrke
Beverly Geyer
Neil and Gail Gibbs
Mark Gilbertstadt
Lisa Brosseau and Allen Giles
Sue Gilsdorf
Jerome Girton
Elizabeth Goebel
Ray Goettl
Barbara Golden
Pamela and Robert Goldman
Renee Goodell
Kurt and Christine Gough
Claire Graupmann
Bradley Greenwald and John Novak
Geordie Griffiths
Greta Grosch
Joan Growe
Nancy Guldberg
Curt and Catherine Gunsbury
Barb Gurstelle
Mike and Chris Hagburg
Pat Hagerty
Sandra Haines
David and Judy Halgren
Peggy Hall and Lee Barry
Mark and Mary Jo Hallberg
Lynn M. and Michael Hallett
Christie Hammes
Nancy Hammond
Nathan and Nicole Hanover
Ardelle Hansen
Rosella Hanson
Thomas Hanson
Ann Harrington and Chris
McPartland
Dr. Daniel C. Hartnett Family
Foundation
John and Kathryn Hatlestad
Phebe Haugen
Judith Hawley
Kathryn Hayes
Andrea and Michael Hazard
Cat Hefferan
Jelan and James Heidelberg
Alan Heider
Julaine Heit
Janet Henquinet
Alison Hernandez
Russell Heuckendorf
Christopher Hibma
Susan Hicklin
Dawn Marie Hill
Wilbur Hill
Sandra Hillesheim
Cheryl and Steve Hochmuth-
Ylvisaker
Mark Hodkinson
Martha P. Hoffman
Jim and Mary Holland
Catherine Holtzclaw
Bridget Honsey
Margaret Horstmann
Margaret and Mark Hottinger
William Mask and Anne Howden
Alyssa Hult
Kathleen and Mark Humphrey
Marcia Hunter

Betsy Husting and Joyce Mellstrom
Hugh Huston
David and LuAnn Iverson
Jay and Beth Jackson
Bruce Jacobs
Sandy Jacobsen and Dean Hedstrom
Diane and Paul Jacobson
Jeanne Jacobson
Greg and Barbara Janssen
Suzanne Jebe
Ann Jenner
Scott and Julie Johnson
Doris Johnson
Jana Johnson
Jen and Ben Johnson
Jim Johnson
Katherine Johnson
Mark Johnson
Patricia Johnson
Thomas L. and Mary D. Johnson
Ellen Jones and Robert McKlveen
Lawrence Jones
Ellen Joseph
Scott and Julie Kammer
Mary Kaphings
Lois Kapteina and David
Truckenmiller
Michael Kearney
Jeremiah and Pamela Kearney
Debra Kelley
Barbara Kettering
Gregory King
Mae Kirby
Patricia Kirkpatrick
Kathy Kirvida
Samuel Kivi
Cyndi and Greg Klaus
Tracy and Craig Knighton
Catherine and Scott Kohanek
Jonna Kosalko and Dan Rabin
Herbert Kritzer
Mark and Rebecca Krug
Sara Ellen Kuether
John Kundtz and Thomas Amon
Diane and Allen Kuperman
Sarah Kuzel Leslie
Joe Kuznik
Jocelyn Maria LaBerge
David Lande
Dr. Erik and Mary Langsjoen
David Larson
Rod and Jan Larson
Dana Laudenbach and Dale Jacobson
Geraldine Lauer
Pat Laulainen
Catherine Lawrence
Patty Lawrence
Pamela Layton
WJ Lazerus
Marcia C. Leatham
Moses Lee
Mathew Lefebvre
Sally Leighninger
Andrew Leshovsky and Louis Berg-
Arnold
Kristie Lester
Judy and Steve Lewis
Mac and Mary Lewis
Barb Lind and Craig Poeschl
Kathleen S. Lindblad
Andrew Litecky
Catherine J. Little
Laura Little
Timothy and Susanna Lodge
Mary and Doug Logeland
Valerie Longfellow
Jeffrey and Diane Lovich

Peggy and Dave Lucas
 Linda Luksan and David Munn
 Judy Lund
 Scott Lykins
 S.D. Lyle and R.J. Beckel
 Debbie and Tom Lyman
 Jack and Lynne MacBean
 Mike MacDonald
 Renee and Gary Macomber
 Jolene and John Madden
 Richard Madigan
 Mike and Diana Magner
 Duayne and Dianne Malewicki
 Will and Willene Mangham
 Bruce Manning and Tricia Cornell
 Joanne Manthe
 Wendell Vandersluis and Cynthia Marsh
 Patrick and Linda Marsh
 Jennifer Marshall and Matthew Haines
 Alfredo Martel
 Vivian and Jeff Martin
 Jeffrey Masco
 Kristin and Jim Matejcek
 Renee Matejcek
 Patricia McCarthy
 Peg McKee and Dean Adams
 Kathleen McLaughlin and Daryl Skobba
 Nancy McNutt
 William and Joan McTeer
 Laurie and Dave Mech
 Marianne Merriman
 Frank and Ginny Meuers
 Aimee Meyer
 Mary Miesle
 Carole and Richard Miller
 David Miller and Mary Dew
 Katherine and Thomas Miller
 Robert Jardin, Kevin Miller and Izzy Miller-Jardin
 David and Karen Minge
 Pamela Mink
 Barb and Kevin Minnerath
 Saralee Mogilner
 Shawne and Michael Monahan
 Jean Montgomery
 Joan Grove
 Jolene Moore
 Peter Moore
 Laurie Mount
 Karen Mueller
 Bonnie Mulligan and Charlie Greenman
 Sarah Murphy
 Nora Murphy
 Peggy Naas
 Allison Nahr
 Katie Regan Nath
 Bonnie Nelson
 Dirk and Laura Nelson
 Joan Nelson
 Nancy Nelson
 Robert and Terry Nelson
 Robert Nesterowich
 Nelson and Beth Neubrech
 Alan Newbold
 Lucia Newell
 Casey Nichols
 Judy Nobles
 Terry Nolan and Carl Markus
 Lynn Noren
 Gary P. Nygaard
 Kathy O'Malley
 Michele O'Rourke
 Lynn Olds
 Mary Olk
 Benjamin Olsen and Derek Waller

Tamara and Robert Olsen
 Elaine and Harry Olson
 Kathie Olson
 Jean Orbison Van Heel
 Carol and Keith Ottoson
 Barbara Owens
 Marcia and Russ Palma
 Mary Ann Palmer
 Mary Jane and Bruce Pappas
 Mark and Julianne Parrott
 Chuck and Jo Parsons
 Lowell and Finola Parsons
 Raymond and Judith Pascoe
 Stephan and Mary Patnode
 Lauren Peck
 Peg Peck
 Susan and William Pelton
 Jeffery Perkey and Robert Spikings
 Carole R. Peterson
 Karlyn Peterson
 Tina Ham Peterson and Ric Peterson
 Stephanie Phelps Johnson
 John Pikala
 Diane Pike
 Pike Willett Family Fund
 Daniel Pinkerton and Jane Johnston
 James and Ellen Pinkowski
 Eileen Pinto
 Guy Piotrowski and William Nour
 Julie and Jim Podlich
 Deborah E. Pollak
 Diana Postlethwaite
 Margaret Powers
 Karen and Don Prestly
 Steve and Susan Prestwood
 Joanne Provo
 Brad and Linda Quarderer
 Debra and Lawrence Que
 Fred Quirsfeld and Linda Campbell
 T. Mychal Rambo
 Judy Reiber
 Tom Renshaw
 Rosemarie and Dick Rice
 David Richardson
 Stephen and Marilyn Riederer
 Jonathan Riehle and Angela Bohmann
 John F. Riehle
 John and Genevieve Ries
 John and Shiela Robertson
 Michael Robins
 Carolyn Roby
 Susan Rose
 Marilyn and Jim Rosenbaum
 Patricia and Duane Rosenberg
 Marilyn Rossmann
 James Roth
 Travis and Sarah Rother
 Mary Rothstein
 Barbara Roy
 Russ and Karen Rubin
 Robert and Wendy Rubinyi
 Carolyn Lee Ruppert
 Cal and Claudia Ryan-Mosley
 Debra Ryan
 Kristin and Robert Ryan
 Stephanie Samara
 Dorene and Ed Sarnoski
 Elaine C. Savick and Michael Hindin
 Tom and Nancy Saxhaug
 Molly Schaaf
 Mary Schaffer
 Julie Schaper
 Noel Schenker
 Gene and Martha Schermer
 Carol Schirmers
 Barbara Schmitt
 Mary Lincoln and Mark Schneider
 Schuler Shook

Meg and Joe Schuller
 Karin Schurrer-Erickson and Ron Erickson
 Steven R. Schwagel
 Judy Schwartau
 Eva Schwartz
 Trish and Ralph Scorpio
 Katie and Ken Searl
 David Sebberson and Meg Lewis
 Dan and Cyndy Seeman
 Sharon and Stephen Segal
 Norah Shapiro
 Jim Sheeley
 Maximillian T. Shemesh and K. Dawn Kohlman-Shemesh
 Kelley Sheppard
 Catherine Shreves and Tom Bird
 Mariana and Craig Shulstad
 Stephen Shuman
 Linny Siems
 Mike Jereczek and Jan Sigmund
 Laura Silver and Jeff Hertzberg
 Mary Sue and Ryan Simon
 Kristin and Harps Singh
 Sue Sjeklocha
 Rolf* and Janet Skjei
 Holly Slattery
 Lisa Slazl
 Bruce Smith and Marie Prottengeier-Smith
 Howie Smith
 Jim Smith
 Rachel Smoka-Richardson and Dan Richardson
 Anthony Sofie
 Robert and Jennifer Soland
 Wendy Sommer
 Steven and Karen Sonnenberg
 Larry Sonsthagen and Bob Shepherd
 Adam Southam
 George Spaulding and Mary Kay Fortier Spalding
 Laurine Speltz and Denis Ryono
 Justin Spenner
 Daniel Taylor and Daniel St. Martin
 Howard Stacker
 Hope Stanley
 Carey Starr
 Angela Steele
 Arturo Steely
 John Stefany and David Odenbach
 Lisa Amman and Phil Steger
 Karen Steger
 Jerry and Margy Stein
 Paul Stein and Peg Powers
 Mary Steinberg
 Peter and Janet Steinhagen
 Donna Stephenson
 Karen Sternal and Lowell Pickett
 Donna Sternberg
 George and Janet Stevens
 Cheryl Stever
 James Stolz
 Claire Stortz
 Glenn Strand
 Tim Strand
 Irene Suddard
 Sue and Harry Summitt
 Robert and Mary Sutherland
 Craig and Janet Swan
 Mary Ann Sweeney
 Julie A. Sweitzer
 Christina M. Szitta
 Ron and Margaret Tabar
 Janet and Howard Tarkow
 Ryan Taylor
 Tammy Taylor
 Jennifer, Daniel, Raina, and Zoey Tenenbaum

Ella Thayer
 Axel Theimer
 Anthony Thein
 Kay Thomas
 Sean Thomas
 Gary and Kay Thompson
 Harv Thompson and Richard Klemm
 Keith Thorkelson
 Erik and Emily Thurman
 Andrea Tichy and Dan Muck
 Douglas Tiede
 Michelle Tolliver
 Kristen Underwood
 Stephanie Untiedt
 Katherine and Martijn van de Ruijtenbeek
 Lisa van der Steur
 Chris Van Klei
 Janet VanFossan
 Tammi Veale
 William A. Velte & Mary Lee B. Blomgren
 Elizabeth Villaume
 Connie Vincent and Greg Moritko
 Mary Claire Wahlberg
 Beckie Wahlin
 Derek Waller
 Lynn and Chuck Wallin
 Ruth and David Waterbury
 Lance Watkins
 Margaret Weber
 Leon and Lindy Webster
 Corliss Weeks
 Marcie Weinandt and Greg Hippen
 Carol and Sandy Weisberg
 Stephanie Weiss
 Jennifer and Joe Weissman
 Tammy Darrah Wenberg and Kyle Kiene
 Daniel Weninger
 Leona Werner
 Robin Westacott
 Jim Westerman
 Shelley White
 Gary and Andrew Whitford-Holey
 Barbara Wiener
 Elizabeth and Cornelius Wiens
 Lori Wilfahrt
 David Young and Edward Williams, Jr.
 Richard Williams
 Ronda Willsner
 Mary Wilmes
 Elaine Wilson and Daniel Barnes
 Fae and Roy Wilson
 Mike Wilson
 Mary Wingfield
 Susan Wolf
 Cynthia Wolff
 Donna and Mike Wolsted
 Steven Wright
 Shawn Judge and Stephen Yoakam
 Mary Youle and Phil Cohen
 Jane U. Young
 Adam Yust
 Randy Zadow
 Srilata Zaheer
 Sue Zelikson
 Julie and Charles Zelle
 Aaron Zenner
 Josh Zenner
 Mark and Penny Ziessman
 Jeanne and Jeff Zlonis
 David and Francine Zook

Honor and Memorial Gifts

In memory of Nancy Burbidge

Jack Burbidge

In memory of Judy Eilertsen

Lucia Newell

In memory of Ben Olk, Jr.

Jean and Jim Hartman

In memory of Nina Rothchild

Ken Rothchild

In memory of Rolf Skjei

Anonymous

Shawn Gilbert

In memory of Linda K. Vilmo

Gregory Vilmo

In memory of her mom, Nancy

Lucia Hunt

In honor of Steve Bergerson

Nancy Mosier

In honor of Carson Brook

Northstar MLS

In honor of Sandy Hey's birthday

Deborah Begin

Holly Denis

Mary Guillaume

Nancy Guldberg

In honor of her sisters, Heather and Hildy

Alison Hernandez

In honor of Beth Hobbs

Nancy Mosier

In honor of Bernadette and Jeff Janisch

Andrea Tichy

In honor of Kate Lawson's birthday

Amy Andersen

In honor of Jodi Manning

Arlene Cohen

In honor of Mary Meighan and David Ingbar

Tim Lodge

In honor of her sister

Diana Postlewaite

In honor of the amazing cast of Puttin' on the Ritz

Sue Salmela

In honor of Peter Rothstein

Robert Frame

Ryan Taylor

In honor of Julie Schaper

Marcia Horwitz

In honor of Hildy Swedean's birthday

Alison Hernandez

In honor of David Walton

Sandy Walton

In honor of David Warner and family

Jody Virnig

In honor of Kiowa and Tyler

Sandra Wieser-Matthews

In honor of Sally Wingert

Douglas Federhart

In honor of Fremajane Wolfson

The Dean Greenberg Family Fund

Deanna Phillips

Gary and Susan Rappaport Family Charitable Fund

In honor of Barbara Wolkoff's birthday

Marjorie Frishberg

In honor of Maggie Zoncki

Judith Hawley

Gala Sponsors

PLATINUM SPONSORS



ClearPath
Wealth Management
Ameriprise Private Wealth Advisory Practice

GOLD SPONSORS

RBC

US Bank

Crave

Joel Gott Wines

next

25 X 25



Five Points (2017). Photo by Dan Norman.

Theater Latté Da was envisioned by Founder and Artistic Director Peter Rothstein as a home for the future of the American musical. TLD has lived this vision since our beginning, with 13 of our 25 mainstage seasons including at least one world premiere. Our NEXT 20/20 campaign allowed TLD to support the development process for 20 new works over five years. We are incredibly grateful to the donors who made this robust endeavor possible.

TLD is embarking on an even more ambitious milestone. Through NEXT 25x25, we will invest in the future of the great American Musical and its playwrights, composers, and lyricists through world premiere productions, the annual NEXT Festival, the NEXT Up development program, and NEXT Generation commissions.

To make a gift in support of NEXT 25x25, please contact Hilary Smith, Director of Development, at hilary@latteda.org for more information.

Legacy Circle

We gratefully recognize the following individuals who have chosen to include Theater Latté Da in their estate plans. These estate gifts will sustain our artistic excellence and fiscal health for years to come:

Kent Allin and Tom Knabel
Mary Ebert and Paul Stembler
Stephen Fischer
John Hemann*

Bill Venne and Doug Kline
Carol Lichterman
Patti Pinkerton
Kevin Winge and Kevin Shores

If you have included Theater Latté Da in your estate plans but are not listed here, or if you would like to learn more about legacy giving to Theater Latté Da, please contact Hilary at hilary@latteda.org.

Corporate Matching Gifts

Amazon Smile
Ameriprise Financial
Best Buy
Lumen Technologies
Medtronic
Nike
Northstar MLS
Optum
RBC Corporate Foundation
Ryan Companies
Thrivent
Target
Toro
UnitedHealth Group
US Bank
Voya Financial
Wells Fargo
Xcel Energy Foundation

In-Kind Supporters

Cornerstone Copy Center
Hammel Green & Abrahamson
Richard Hamson
Christine Schrami
Norma Seahorse
Lucas Wells



Funders are listed for the donations made between April 1, 2021 to July 31, 2022. Please accept our apologies for any errors or omissions. A complete list of donors can be found online at latteda.org. For corrections, please contact development@latteda.org.

Board of Directors

Cara Sjodin, *Chair*
Glyn Northington, *Vice Chair*
Les Bendtsen, *Secretary*
Bridget Morehead, *Treasurer*

Theresa Alewine
Tiffany Cooper-Allen
John Arechar
Toya Stewart Downey
Keith Ford
Ron Frey
Matt Fulton
Ben Grabski
Sandy Hey
Tom Knabel
Christine Larsen
Kate Lawson
Jeff Lin
Penny Meier
Peter Rothstein, *ex-officio*
Elisa Spencer-Kaplan, *ex-officio*
Brian Svendahl
Kari Groth Swan
Rabindra Tambyraja
Lezlie Taylor
Kevin Winge
Fremajane Wolfson

Staff

Peter Rothstein
Founding Artistic Director
Elissa Adams
Associate Artistic Director & Director of New Work
Kelli Foster Warder
Artistic Associate

Elisa Spencer-Kaplan
Managing Director
Allen Weeks
Director of Production & Operations
Hilary Smith
Director of Development

Production

Kyia Britts
Associate Production Manager

Amber Brown
Costume Supervisor

Eric Charlton
Associate Technical Director

Whitley Cobb
Carpenter

Sara Herman
Scenic Charge

Jessica Mrovka
Lighting Supervisor

Bethany Reinfeld
Technical Director

Nicholas Tranby
Audio Supervisor

Abbee Warmboe
Props Supervisor

Co-Founder
Denise Prosek

Marketing & Guest Services

Chris Cartwright
Marketing Manager

Gillian Constable
Box Office Manager

Arianna Diaz-Celon
Box Office Associate

Monty Hays
Box Office Associate

Reece Gray
Guest Services Manager

Grace Peterson
Box Office Associate

Kathleen Sullivan
Concessions Supervisor

Rachel Smoka-Richardson
Development Contractor

Accounting
Roni McKenna

Legal Counsel
Michael Sinder




CONCESSIONS IS BACK!

Enjoy our selection of beer, wine,
non-alcoholic beverages and snacks!



REQUIEM FOR FRANKIE SILVER



NOVEMBER 5, 2022

**Great Benson Hall
Bethel University**

**Bradley Greenwald
as The Storyteller**

**Lauren Senden
as Frankie Silver**

World Premiere of a
new musical drama honoring
Frances Stewart Silver (1815-1833)
revealing her tragic story of injustice

Craig Fields libretto
Craig Carnahan music
Sharyn McCrumb narratives
based on her novel *Ballad of Frankie Silver*
Kirk Hoaglund producer

ORDER TICKETS

online: tickets.bethel.edu

phone: **651-638-6333**

www.orpheusmusicproject.org

preview audience reactions:

“COMPELLING” “STUNNING” “RIVETING” “POWERFUL”

ORPHEUS **MUSIC
PROJECT**



RESTROOMS

We have fully remodeled our lobby and restrooms to make them All Gender restrooms. Each contains five fully private stalls with ADA accessible facilities.

ACCESSIBILITY

Accessible seating: Accessible seating is available at the Ritz Theater in Row E, Sidebar P, and Sidebar Q. All other seating requires stairs for access.

Courtesy wheelchairs: Courtesy wheelchairs are available for use for patrons who may have mobility challenges. Please see our House Manager or Box Office Manager for use.

ASL Interpreted Performances: We offer ASL-interpreted performances for every production during our season. These performances are usually offered the second Thursday in each production.

Audio Described Performances:

Professional audio describers provide narration of on-stage action, costumes, and scenery during the performance. Listening devices are available for patrons to use during the AD scheduled performances.

Open Caption Performances: We offer open captioning for select weekend performances. Captions of the text are displayed on a screen near the stage, more easily read from our sidebar seats. Check the performance calendar for the open captioning dates or call the Box Office at 612.339.3003 for details.

Assisted Listening Devices: We offer assistive listening devices for all performances. Please stop at the Box Office to check one out for use during the performance.

Large print programs: Large print programs are available upon request. Please see the box office or request a copy from an usher.

AUDIENCE INFO & POLICIES

COVID-19 Policy: As we kick off a brand new season at the Ritz Theater, we are no longer requiring proof of vaccination or a negative COVID-19 test result. Masks are welcome but optional, EXCEPT for Wednesday night & Sunday matinee performances when they are required. This policy is subject to change.

Photo & Video: Photos of the set are allowed before or after the show and during intermission, but not when artists are onstage. Video or audio recording of any kind is strictly prohibited.

Phones: The ringing of cellular phones or texting is highly disruptive during a performance. These devices should be turned off during the performance.



PHOTO BY LUCAS WELLS

CHRISTMAS AT THE LOCAL

WORLD PREMIERE

FEATURING DYLAN THOMAS' A CHILD'S CHRISTMAS IN WALES

COMPOSED BY CERYS MATTHEWS AND MASON NEELY

AND "THE LONGING FOR AMAZING PEACE"*

MUSIC BY CHASTITY BROWN AND LYRICS BY DR. MAYA ANGELOU

DIRECTED BY LARISSA KOKERNOT AND PETER ROTHSTEIN

MUSIC DIRECTION BY JASON HANSEN



THEATER MUSICALLY

NOV 29, 2022 - JAN 1, 2023 • RITZ THEATER

*COPYRIGHT © 2022 CAGED BIRD LEGACY (ASCAP)